

ROYAL TUNBRIDGE WELLS TOWN FORUM

The Royal Tunbridge Wells Town Forum is a partnership between residents' representatives and ward councillors in the town of Royal Tunbridge Wells. (This is the unparished area of the Borough of Tunbridge Wells, Kent)

We seek to ensure that:

1. Royal Tunbridge Wells is becoming clear of 'Grot Spots' with priority on the Ritz Building Cinema Site by 2010.
2. Kent Highways (KCC) delivers the promised "high standard" regarding roads, pavements, streetlights and signs.
3. The town centre of Royal Tunbridge Wells becomes more pedestrian friendly.
4. A quality supermarket is reintroduced at the former Morrisons site, Station Approach.
5. Adequate and appropriate leisure facilities are available for ALL ages.
6. Royal Tunbridge Wells is promoted as a centre for Art and Culture.

To achieve this, we need YOU to get involved!

Further details on how to join go to: www.townforum.org.uk

Royal Tunbridge Wells Town Forum
c/o Samantha Timms - Town Hall
Royal Tunbridge Wells TN1 1RS

Produced by Royal Tunbridge Wells Town Forum - db/2008



db / April 2008

ROYAL TUNBRIDGE WELLS TOWN FORUM

1. Royal Tunbridge Wells is becoming clear of 'Grot Spots' with priority on the Ritz Building Cinema Site by 2010.
2. Kent Highways (KCC) delivers the promised "high standard" regarding roads, pavements, streetlights and signs.



db / April 2008



ROYAL TUNBRIDGE WELLS TOWN FORUM

Focus Group “Brighten up Royal Tunbridge Wells”

Daniel Bech
John Cunningham
Michael Doyle
John Goodfellow
Michael Larsen
George Lawson
Leonard Price
David Wakefield



29 November 2005



ROYAL TUNBRIDGE WELLS TOWN FORUM

Focus Group “Brighten up Royal Tunbridge Wells”

Top 10 Eyesores

- Ritz Building - Cinema Site
- Eridge Road (Land behind Petrol Station)
- Tunbridge Wells Central Station
- Balustrades and Colonnade of Monson Road
- Greyhound Public House
- 30 Warwick Park
- Summerhill House, 73 Inner London Road
- 32 Mount Ephraim
- Albert Street (opposite RV P Car Park)
- RTW Wiesbaden Tw in Town road signs

- Premises in Quarry Road (next to Barnabas school)
- Medway Depot / TWBC Printing Dept.

db / November 2005

**Focus Group “Brighten up Royal Tunbridge Wells”
Top 10 Eyesores - revisited October 2006**

- Ritz Building - Cinema Site ☹
- Eridge Road (Land behind Petrol Station) ☹
- Tunbridge Wells Central Station ☹
- Balustrades and Colonnade of Monson Road ☹
- Greyhound Public House ☹
- 30 Warwick Park ☺
- Summerhill House, 73 Inner London Road ☹
- 32 Mount Ephraim ☹
- 18 Victoria Road (opposite RVP Car Park) ☹
- RTW & Wiesbaden Tw in Town road signs ☹

- Premises in Quarry Road (next to Barnabas school) ☹
- Medway Depot / TWBC Printing Dept. ☹

db / October 2006

Planning Committee - Presentation

Top 10 Eyesores – Planning Committee revisited June 2007

- Ritz Building - Cinema Site ☹
- Eridge Road (Land behind Petrol Station) ☹
- Tunbridge Wells Central Station ☹
- Balustrades and Colonnade of Monson Road ☹
- Greyhound Public House ☹
- 30 Warwick Park ☺
- Summerhill House, 73 Inner London Road ☹
- 32 Mount Ephraim ☹
- 18 Victoria Road (opposite RVP Car Park) ☹
- RTW & Wiesbaden Tw in Town road signs ☹

- Premises in Quarry Road (next to Barnabas school) ☹
- Medway Depot / TWBC Printing Dept. ☹

db / June 2007

HAS EVERYTHING BEEN CLEANED UP?



db / November 2005 - April 2008

RITZ Building (Cinema site)
empty since 2000



db / November 2005

Design Competition winner:
Panter Hudspith Architects'



<http://www.twbc-pps.co.uk/cinemasite/index.htm>

February 2008

Runner up: AVANTI



February 2008

Runner up: ctmarchitects



February 2008

Runner up: FAT



February 2008

Runner up: Hazle McCormack Young

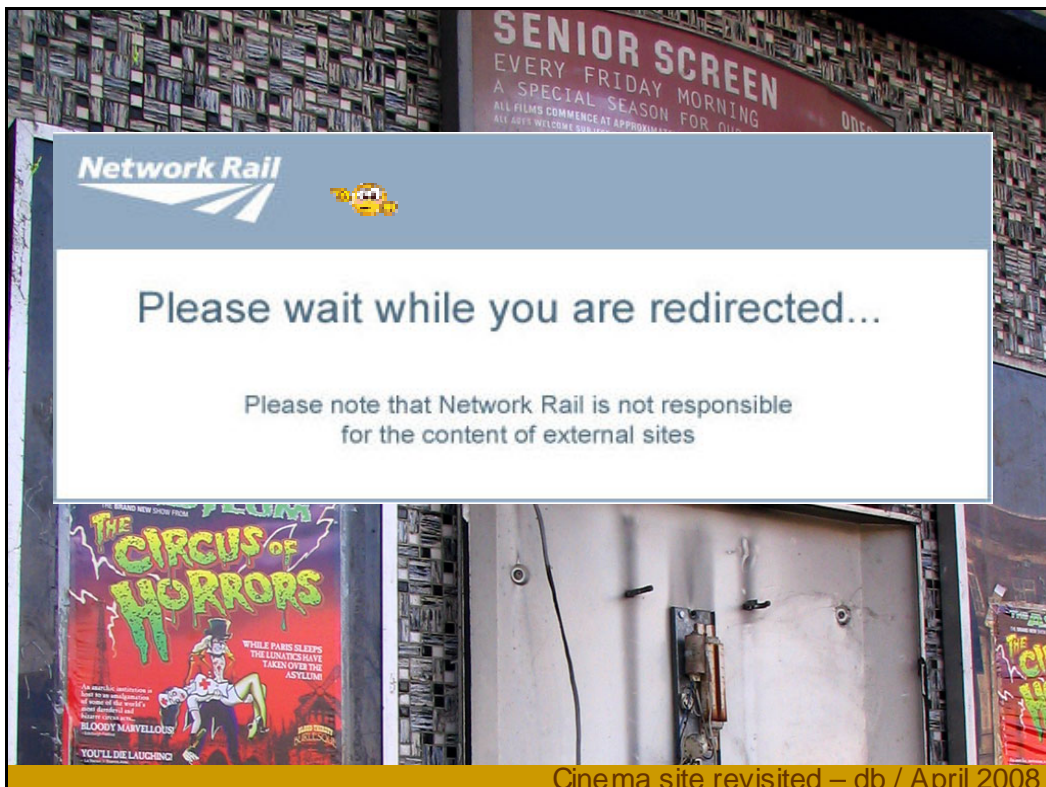


February 2008

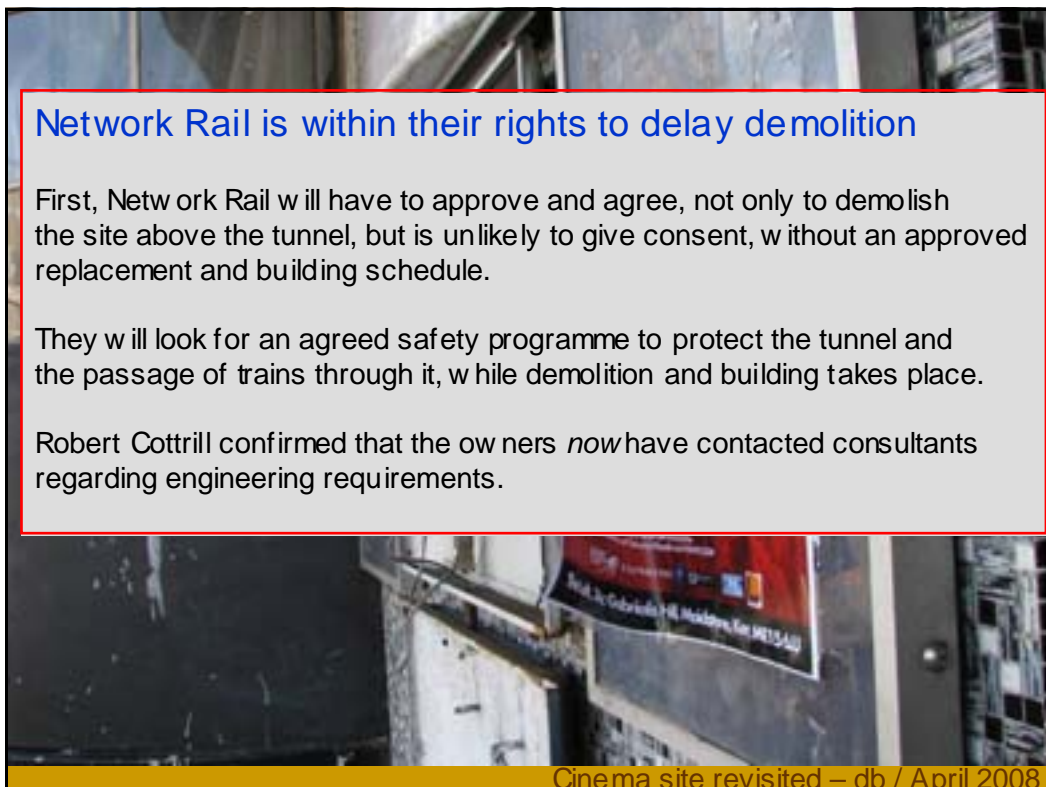
Runner up: Stanton Williams



February 2008



Cinema site revisited – db / April 2008



Cinema site revisited – db / April 2008







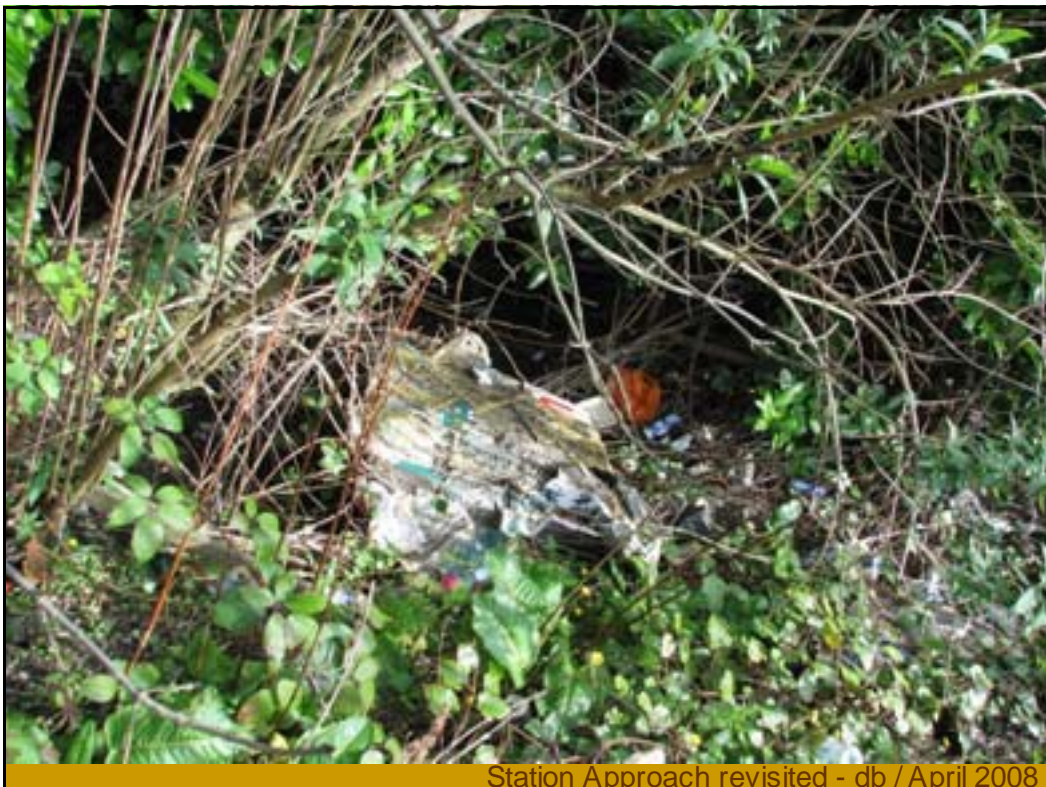
closure 2006 - revisited - db / April 2008



closure 2006 - revisited - db / April 2008



Station Approach revisited - db / April 2008



Station Approach revisited - db / April 2008

. . . is a toilet missing at the Station?



Royal Tunbridge Wells Railway Station revisited – db / April 2008

Eridge Road – behind Filling Station



db / November 2005

Eridge Road – behind Filling Station



db / November 2005



Eridge Road – behind Filling Station revisited – db / April 2008



Fridge Road – behind Filling Station revisited – db / April 2008



Nevill Terrace - db / April 2008

Monson Road Colonnades and Balustrades



db / November 2005



Monson Road. Colonnades and Balustrades revisited – db / April

Greyhound Pub – Grosvenor Bridge



db / November 2005



Greyhound Pub – Grosvenor Bridge revisited – db / April 2008

Derelict Garage – Grosvenor Bridge



Japanese Knotweed farm – Grosvenor Bridge



30 Warwick Park



db / November 2005



30 Warwick Park revisited - db / April 2008

Summerhill House, 73 Inner London Road



db / November 2005



Summerhill House, 73 Inner London Road revisited – db / April 2008

32 Mount Ephraim



db / November 2005

18 Victoria Road – opposite RVP car park



db / November 2005



18 Victoria Road revisited - db / April 2008

KHS 04.2006: 21. TWBC sign poor state of repair (Eridge Road)

TWBC: The town entrance signs were painted earlier this year, and replacements are proposed for next year



Town sign, Tourism
Eridge Road

db / October 2005

May 2007 - All Town/Twinning signs are in need of adequate replacement



Town sign, Tourism, 'Visitors' first impression!

Edge Road

db / April 2007

RTW – Wiesbaden Twin Town road signs



Bayham Road

db / November 2005



RTW – Wiesbaden Twin Town road signs revisited – db / April 2008



Quarry Road

db / November 2005



Quarry Road revisited – db / April 2008



Quarry Road revisited – db / April 2008

Medway Depot / TWBC Printing Dept



db / November 2005



Medw ay Depot / TWBC Printing Dept revisited – db / April 2008

Medway Depot – Corner St James Road



db / November 2005



Medway Depot – Corner St James Road revisited – db / April 2008

ROYAL TUNBRIDGE WELLS TOWN FORUM


Planning Committee - Presentation
Top 10 Eyesores (2005) - revisited April 2008

- Ritz Building - Cinema Site ☹
- Eridge Road (Land behind Petrol Station) ☹
- Tunbridge Wells Central Station ☹ ☹
- Balustrades and Colonnade of Monson Road ☹
- Greyhound Public House ☹
- 30 Warwick Park ☺ ☹
- Summerhill House, 73 Inner London Road ☹
- 32 Mount Ephraim ☹
- 18 Victoria Road (opposite RVP Car Park) ☹ ? ☹
- RTW & Wiesbaden Tw in Town road signs ☹ 


- Premises in Quarry Road (next to Barnabas school) ☹
- Medway Depot / TWBC Printing Dept. ☹

db / April 2008

ROYAL TUNBRIDGE WELLS TOWN FORUM



**WHAT ELSE IS THERE TO
COMPLAIN ABOUT?**



db / April 2008

More trouble cases . . .





Hawkenbury, Forest Road - cc / April 2008



Goods Station Road - db / April 2008



Goods Station Road - db / April 2008



Goods Station Road - db / April 2008



Kent Empty Property Initiative

“When Negotiation Fails”

Andrew Lavender

www.no-use-empty.org



Corporate Commitment

- To deal effectively with long term empty properties, there must be a corporate approach to the problem
- Each department must have a clear understanding of its role and the roles of other colleagues in the process:
 - Env . Health (enforcement, grants / loans, BVPI64 data collection, database updating, RSL liaising)
 - Revenue & Benefit (council tax info, debts, ownership details)
 - Planning (enforcement, 106 agreements, planning applications)
 - Building Control (enforcement, conversions works)
 - Legal (advice & support, recovery of debt, enforcement)
 - Public relations (publicise outcomes, human interest stories)

www.no-use-empty.org



Statutory Intervention

- Councils have a range of powers at their disposal to secure the improvement of properties.

Three methods used effectively by the Initiative include:

- **Enforced Sales Procedure**
- **Empty Dwelling Management Order**
- **Section 215 Town & Country Planning Act 1990**

www.no-use-empty.org



Statutory Intervention

- Councils have a range of powers at their disposal to secure the improvement of properties.

Three methods used effectively by the Initiative include:

- **Enforced Sales Procedure**
- **Empty Dwelling Management Order**
- **Section 215 Town & Country Planning Act 1990**

www.no-use-empty.org





Grosvenor Road - cc / April 2008



Mt Ephraim - db / April 2008

The pride of business?



Mt Ephraim - db / April 2008



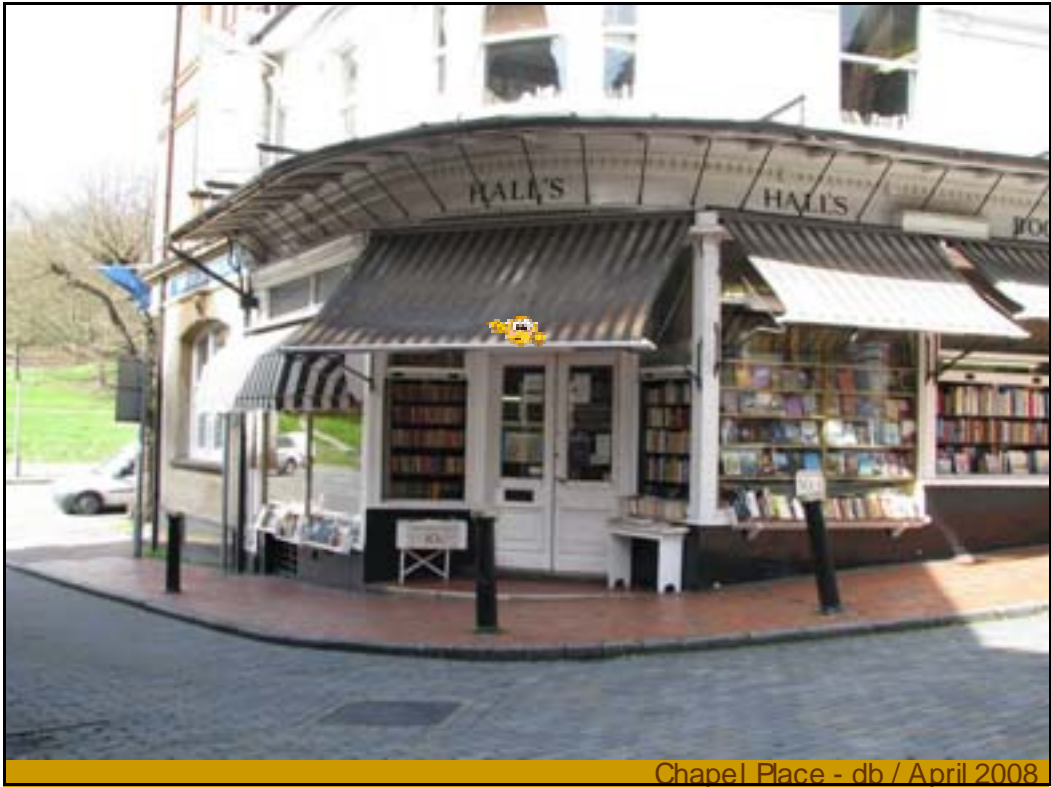
Mt Ephraim - db / April 2008



York Road, Cotswold Outdoors - db / April 2008



Mt Pleasant Avenue Lloyds Bank - db / April 2008



Chapel Place - db / April 2008



Camden Road - db / April 2008



Mt Pleasant Road – db / April 2008



Chief Excec W.E. Battersby - Albert Street – db / April 2008







KCC Adult Learning, behind Library – db / April 2008



KCC Adult Learning, behind Library – db / April 2008





Crescent car park - db / April 2008



Street scene

Real Estate advertisements

db / March 2006





roundabout Calverley Road – db / April 2008



Street scene

London Road. Union House car park

db / 25 May 2007

April 2008 - Union House car park fence still cluttered with Real Estate Signs



Street scene

London Road, Union House car park

db / April 2008

Graffiti persists all over town



Street scene

Forest Road – Mt Pleasant

cc / April 2008



Street scene

London Road – New ton Road

cc / April 2008



DOG MESS EVERYWHERE!



York Road - db / April 2008



Mt Pleasant - db / April 2008



Trinity Gardens - db / April 2008



St. John's Recreation Ground - db / April 2008



St John's Rec. - db / April 2008

Legislation in place, but is it visible enough, is it enforced?



Dog Fouling Act – db / April 2008



Ask the Leader Blog:

RE: Uncaring Attitudes / Christopher Cassidy 8 April 2008

What's wrong with becoming too draconian? Joe Public just doesn't seem to listen to friendly warnings any more. Are gum droppers handed out fines just like litter droppers? Perhaps posters reminding people, you could put them on the side of the rubbish carts that get pushed around town for all-over-town coverage.

Chewing Gum removal – db / April 2008



Grosvenor Road – db / April 2008



St John's Road – Arriva Bus Station – db / April 2008



Planters - Calverley Road - Precinct - db / April 2008



Mt Pleasant - db / April 2008



Footpath leading from York Road to Trinity - db / April 2008



Belgrave Road - db / April 2008



Castle Street - db / April 2008



Mt Pleasant Avenue - db / April 2008



Five Ways - db / April 2008



passage Meadow car park / Grosvenor Road - db / April 2008



Dudley Road – db / April 2008



Richmond Terrace, London Road – revisited - db / April 2008



Mt Zion - db / April 2008

KHS 04.2006: 1. Introduction



db / March 2006 - revisited May 2007 - revisited April 2008

April 2008 situation still the same



Enforcement – Bus gate

Mount Pleasant Road

db / 25 May 2007 - 11:19 am

KHS 04.2006: 10. No problems KHS signing OK – above TWBC signs

TWBC: All signs on the lamp column are KHS



Street clutter

West Station

db / March 2006

April 2008 still the same



Street clutter

West Station

db / April 2008

Would it work with a tree?



Street clutter

roundabout Calverley Road – Carr's corner

db / April 2008

May 2007 Information sign still promotes 'A Day at the Wells'



Misleading direction sign

Montacute Road / Linden Park Road

db / 25 May 2007

April 2008 Information sign(!) still promotes 'A Day at the Wells'



Misleading direction sign

Montacute Road / Linden Park Road

db / April 2008





Street scene, 'First impression', Clutter, defect lamps,

London Road / Fridge Road / Nevill Terrace

db / April 2008

KHS 04.2006: 11.



Street clutter, too many traffic signs for the same purpose, defect lamp

Forest Road

db / March 2006

May 2007 still the same clutter, lights on during day-time



Forest Road

db / May 2007

April 2008 still the same clutter



Forest Road

db / April 2008

April 2008, lights on during day-time



Forest Road

db / April 2008

May 2007 – 62 bollards on the precinct do not fulfil their purpose



Street clutter - too many bollards

Five w avs. Precinct

db / May 2007



KHS 04.2006: 15. KHS signs to be washed (Forest Road. Warwick Park)



Lamp post with Heritage value in need of restoration

Forest Road / Warwick Park

db / March 2006



Lamp post with Heritage value in need of restoration

Forest Road / Warwick Park

db / April 2008

KHS 04.2006: 16. Before and after shot of de-cluttered lighting column



April 2008 - some previously appalling looking lamp posts have been painted





eg. Warwick Park

db / April 2008



Traffic sign – damaged column, light on during day

Warwick Park / Forest Road

db / 25 May 2007



Traffic sign – damaged column, light on during day

Warwick Park – Forest Road

db / April 2008



Direction sign – rusty, dirty sign to attract Tourism

Major York's Rd / Fir Tree Rd / Hundershall Park Rd

db / March 2006



April 2008 – CLEAN!!!



Pantiles / Union Square

db / April 2008

KHS 04.2006: 19. KHS - Faded Tourist Info sign – no priority



Direction sign – faded, dirty sign to attract Tourism
Victoria Road / Meadow Road

db / March 2006

May 2007 - same state



Direction sign – faded, dirty sign to attract Tourism

Victoria Road / Meadow Road

db / 25 May 2007

April 2008 – it HAS been taken off



Victoria Road / Meadow Road

db / April 2008

KHS 04.2006: 20. Private sign (Pantiles) owned by Manor of Rusthall

May 2007 - same state



Street scene, Tourism

Pantiles

db / March 2006

KHS 04.2006: 20. Private sign (Pantiles) owned by Manor of Rusthall

April 2008 - same screws missing



Street scene, Tourism

Pantiles

db / April 2008

KHS 04.2006: 25. KHS arranged sign cleaning and vegetation cut.



Traffic sign

Mount Ephraim Road – Report 08.09.05 ref 20446 J.Higgs db / March 2006



Traffic sign

Mount Ephraim Road – Report 08.09.05 ref 20446 J.Higgs db / April 2008



KHS 04.2006: 26. KHS – Signs will be cleaned (Forest Road)



Traffic sign - dirty

Forest Road

db / March 2006



Traffic sign – Indoor Bowls Club twisted

Forest Road

db / April 2008

April 2008 – still many of the byelaw signs are dirty, worn or have been torn off



db / 25 May 2007

KHS 04.2006: 32. PROW and TWBC Leisure Services. (Forest Road) vegetation over grown and sign worn – passed to PROW 16th May.



TWBC: TWBC Leisure Services to review their signing. Low priority

Exemplary Footpath sign, but not maintained

Forest Road

db / March 2006

May 2007 - same state



Exemplary Footpath sign giving clear directions! In need of maintenance

Forest Road

db / 25 May 2007

April 2008 - same state



Exemplary Footpath sign giving clear directions! In need of maintenance

Forest Road

db / April 2008

KHS 04.2006: 34. KHS – sign will be replaced, incorporated into sign repair programme (London Road)



Direction signs - damaged

London Road

db / March 2006

KHS 04.2006: 35. KHS – sign will be replaced, incorporated into sign repair programme (London Road)



Direction signs – damaged

London Road

db / March 2006

May 2007 - same state



London Road

db / 25 May 2007

April 2008 - same state



London Road

db / April 2008



Frant Road

db / April 2008

KHS 04.2006: 37. Street lighting (Chapel Place/Bedford Terrace)
instruction on behalf of TWBC

TWBC: The three columns in Chapel Place and the footpath behind
Church of Charles Martyr are being replaced by TWBC.

solved



Lamp post with Heritage value in need of restoration
Chapel Place / Bedford Terrace

db / March 2006

KHS 04.2006: 40. KHS arranged removal of redundant column. (Garden Street)



2007 – there was a promise to have the redundant column restored and placed in Cumberland Gardens to compliment the restored post in Cumberland Walk

Garden Street

db / March 2006

KHS 04.2006: 39. Nevill Gate – Privately owned column.
Belgrove – cannot locate column.
Grove Hill Gardens – Private Road – Residents assoc.



Dec 2006 – a list of about 25 similar Heritage lamp posts in need of restoration were made available to TWBC (Lene Beynon / Brian Hayward)

Nevill Gate / Belgrove / Grove Hill Gardens

db / March 2006

April 2008 – Sadly, they seem to fall now one by one



Upper Stone Street

db / April 2008

KHS 04.2006: 42. KHS to arrange replacement lantern – quote being obtained. (Nevill Terrace)



Lamp post with Heritage value in need of restoration

Nevill Terrace

db / March 2006

Opportunity to restore and make cast for replicas



Nevill Terrace

db / 25 May 2007

April 2008 – same state



Lamp post with Heritage value in need of restoration

Nevill Terrace

db / April 2008

44. Columns owned and maintained by South Eastern trains.
(Mount Pleasant/footpath to station) spot light fixed to lighting column –
reported to South Eastern 0845 000 2222 ref 1122520 22nd May

May 2007 same state



Mt Pleasant / footpath to Station

db / April 2006

April 2008 - replaced



Mt Pleasant / footpath to Station

db / April 2008

KHS 04.2006: 45. TWBC owned lighting columns. (Grove) lamps are ill-fitted
TWBC: Order has been issued to replace lantern and straighten columns.



Park lights - in need of re-setting
Grove

db / March 2006

May 2007 - same state: lamp heads and or columns still tilted



Park lights - in need of re-setting
Grove

db / 25 May 2007

April 2007 - lamp heads and or columns still tilted



Park lights - in need of re-setting
Grove

db / April 2008

May 2007 - same state



Traffic sign – dirty, light on during day-time
Calverley Park Gardens

db / 25 May 2007

April 2008



damaged traffic sign – dirty, light on during day-time

Calverley Park Gardens

db / April 2008

May 2007 - many signs need light redirection



Sign light - light needs to be redirected, sign missing?

eg. Victoria Road / Meadow Road

db / 25 May 2007



May 2007 - same state, many of these are not functioning during the night



Traffic sign – light direction to be reset, not working

High Street

db / 25 May 2007

April 2008 – same state

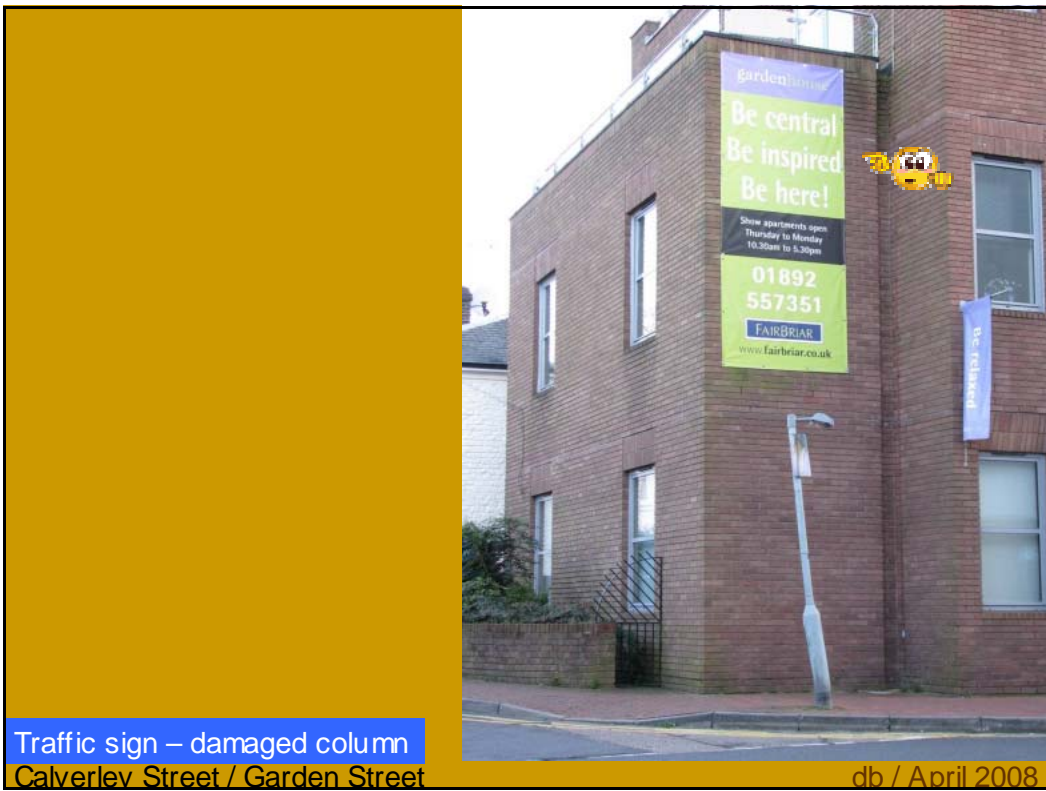


Traffic sign – light direction to be reset, not working

High Street

db / April 2008



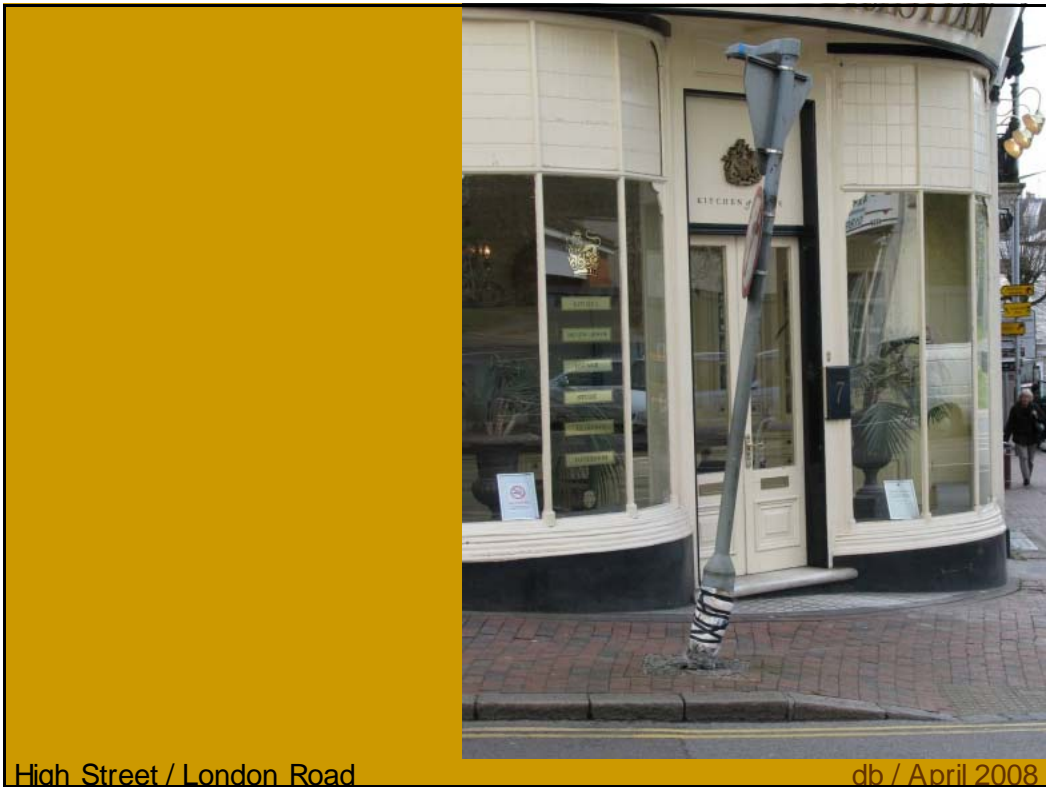




Traffic sign – damaged column, light on during day-time

High Street / London Road

db / 25 May 2007



High Street / London Road

db / April 2008







Forest Road / Bayhall Road

db / April 2008



Lamp post with Heritage value in need of restoration

Crescent Road - 10.2005 / 03.2006

db / March 2006



April 2008 – many other examples in town where spalls need reinstating



Bollards –spalls need to be reinstated

eg. Nevill Street / Frant Road

db / 25 May 2007

KHS 04.2006: 63. PROW/Private – damaged safety barrier.
(London Road/Vale Road, Common) Passed to PROW 16th May
May 2007 same state



Railings – ineffective safety barrier as pedestrians walk around it

London Road / Vale Road / Common

db / March 2006



Railings – ineffective safety barrier as pedestrians walk around it

London Road / Vale Road / Common

db / April 2008



Grosvenor Road / Mt Ephraim

cc / April 2008

Drive to fill funding gap on roads and pavements

Kent's roads are some of the busiest in the country, yet government grant funding for repairs has been at a standstill for the past two years.

Kent County Council recognises it cannot stand back and allow the potholes to grow and the cracks to spread. It has therefore put its own funding into stepping up repairs.

On the pavement front, a £5million drive by Kent Highway Services is underway.

80 separate schemes

The countywide programme will see more than 80 separate schemes carried out over the next two years. Work started in May and includes paths in town centres and rural villages. Special attention

is being given to regeneration and conservation areas.

Pavements are made safer

KCC Cabinet Member for Environment and Highways Keith Ferrin said: "I am pleased that we are doing this work. It is a substantial programme, meaning many of our pavements are made safer and will be in better condition."

"We have made a commitment to improve the county's roads and pavements and this two-year programme will go a long way towards this."

On the pavement front a £5million drive by Kent Highway Services is underway.



Cabinet Member Keith Ferrin highlights the problem

"We will be deliberately targeting regeneration areas countywide to help them give a good impression. We will also ensure that the materials used are in keeping with important heritage areas in town centres by liaising closely with district conservation officers."

On the roads front KCC

is trying to counteract its national funding standstill. "Not trying to repair roads is not an option and will cost everyone more in the long run through surfaces totally failing, increased insurance claims from motorists and pedestrians and more accidents. Everything we are fighting

The countywide programme will see more than 80 separate schemes carried out over the next two years.

to avoid and improve. I am glad everyone at County Hall sees the sense in trying to get the roads and pavements fixed."

Service companies (Water, Electricity, Gas, CATV, BT) often do not reinstate bricks, but leave a messy job behind



Pavement – brick pavement patched with tarmac or concrete

KHS 04.2006: 69. OK and safe. (Church Road/Cala Homes Telephone House)

Developer should have been asked to reinstate bricks instead of a tarmac patch



Pavement – patched with tarmac instead of reinstating bricks

Church Road / Cala Homes Telephone House

db / March 2006

Developer should have been asked to reinstate bricks instead of a tarmac patch



Pavement – patched with tarmac instead of reinstating bricks

Church Road / Clarence Road

db / April 2008

May 2007 - virtually every brick pavement has been patched up at some time
somewhere with tarmac instead of like for like replacement



Brick pavement – patched with tarmac, kerb damaged

eg. Park Road

db / 25 May 2007

May 2007 - virtually every brick pavement has been patched up at some time
somewhere with tarmac instead of like for like replacement



Brick pavement – patched with tarmac

eg. Claremont Road, Entrance Grove

db / 25 May 2007

May 2007 - virtually every brick pavement has been patched up at some time
somew here w ith tarmac instead of like for like replacement



Brick pavement– patched w ith tarmac

eg. Cumberland Walk / Chapel Place

db / 25 May 2007

May 2007 - virtually every brick pavement has been patched up at some time
somew here w ith tarmac instead of like for like replacement



Brick pavement – patched w ith tarmac

eg. Forest Road near Farmcombe Open Space

db / 25 May 2007

May 2007 - virtually every brick pavement has been patched up at some time
somewhere here with tarmac instead of like for like replacement



Brick pavement – patched with tarmac

eg. Forest Road before Warwick Park junction

db / 25 May 2007

May 2007 - virtually every brick pavement has been patched up at some time
somewhere here with tarmac instead of like for like replacement



Brick pavement – patched with tarmac

eg. Camden Road / Garden Road

db / 25 May 2007

May 2007 - virtually every brick pavement has been patched up at some time
somew here w ith tarmac instead of like for like replacement



Brick pavement w ith spalls – Listed pavement patched w ith tarmac

eg. Mount Eohraim

db / 25 May 2007

May 2007 - virtually every brick pavement has been patched up at some time
somew here w ith tarmac instead of like for like replacement

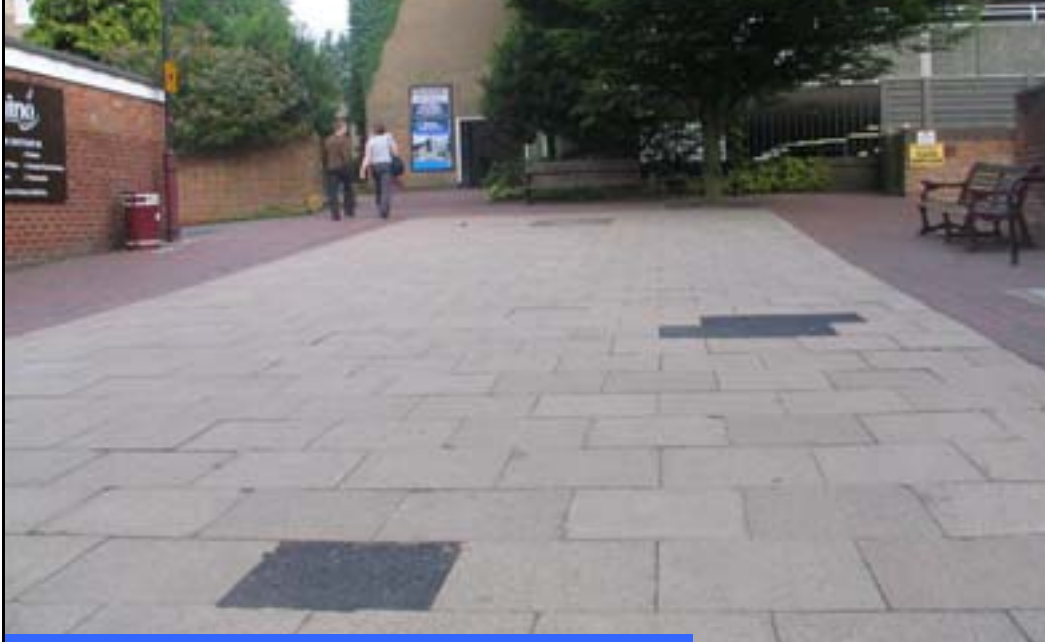


Pedestrian zone - 'Designer' slabs and bricks replaced w ith tarmac patches

eg. Precinct

db / 25 May 2007

May 2007 - virtually every brick pavement has been patched up at some time
somewhere with tarmac instead of like for like replacement



Civic square - 'Designer' slabs replaced with tarmac

eg. Monson Road leading to Crescent Car park

db / 25 May 2007



Civic square - damaged slabs

Square Mt. Pleasant / Church Rd opposite Town Hall

db / 25 May 2007



eg. Square Mt Pleasant / Church Rd opposite Town Hall db / April 2008



re: Square Mt Pleasant / Church Rd opposite Town Hall db / April 2008

KHS 04.2006: 74. TWBC experiment with local banks

TWBC: Agreement between Kent Highway Partnership
(Highway Authority) and the Safe Town Partnership in 2005



London Road – Barclays Bank

db / March 2006

KHS 04.2006: 74. TWBC experiment with local banks



London Road – Barclays Bank

db / April 2008

75. TWBC enforcement/Police. (Dudley Road)

*TWBC: Parking on footways and yellow lines can only be enforced when the restrictions are applicable.
The time and circumstances are not known.*



Parking on pavements is unlawful

Dudley Road

db / March 2006

KHS 04.2006: 79. No Problem.— is direction OK?

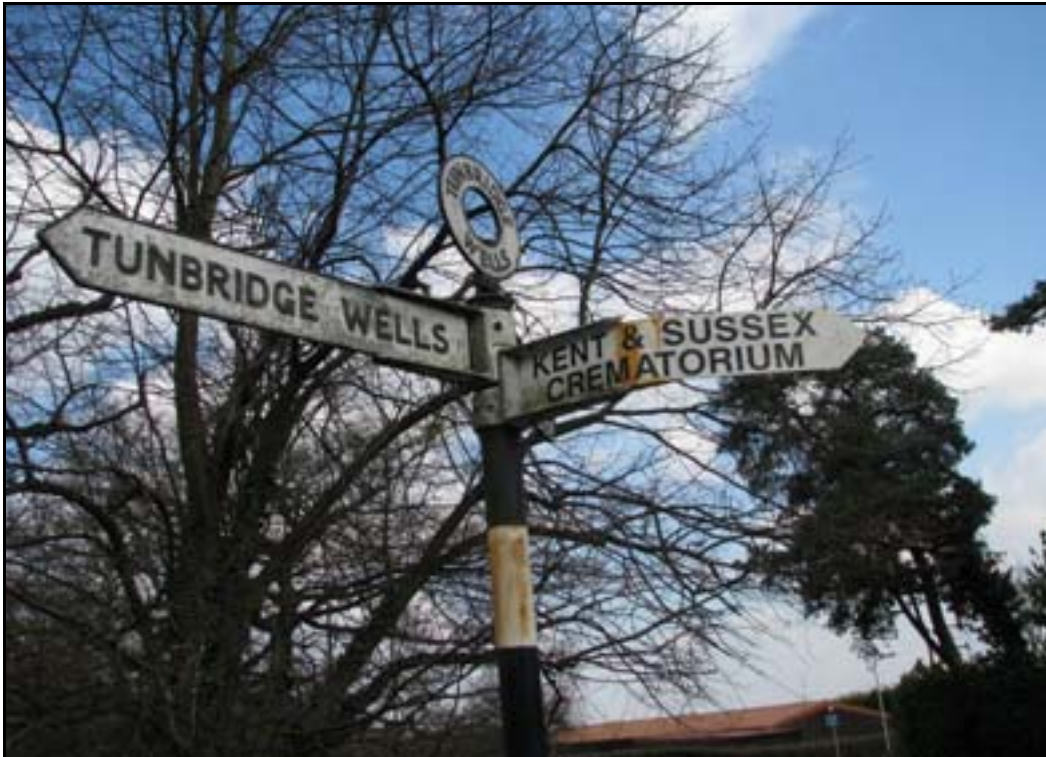
No problem: exemplary 'English',
as depicted in many English movies



Traditional Direction signs

Bayhall Road / Hall's Hole Road

db / March 2006

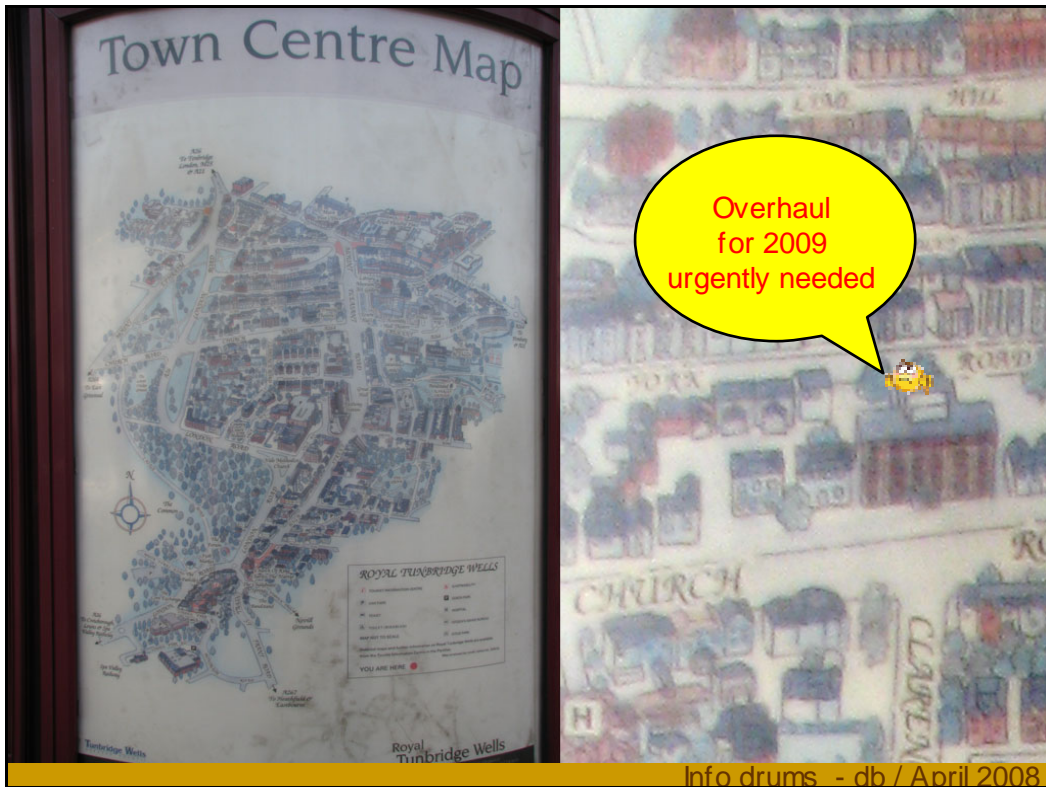


Bayhall Road / Hall's Hole Road

db / April 2008



Mt Pleasant - db / April 2008



ROYAL TUNBRIDGE WELLS TOWN FORUM

GROT SPOTS in Royal Tunbridge Wells

- All pictures are examples only of the various topics:

dilapidated buildings, empty buildings, untidy land
 sign clutter, real estate signs, town signs, road signs,
 direction signs (damaged, not maintained, dirty)
 lampposts (defect, strapped), stumps, commercial refuse
 bins, litter, cigarette butts, bollards, info drums, railings,
 benches, graffiti, dog fouling, maintenance of pavements
 (tarmac, bricks, ATMs), parking

db / April 2008